

ADJUSTABLE WALL LIGHT WITH BLACK SHADE



Part: N/A

Categories: [Brochure](#), [Lighting](#), [Wall Lights](#), [Wall Lights](#), [Wall Lights](#)

ADDITIONAL INFORMATION

Finish	Antique Brass, Bronze, Pewter, Polished Brass, Satin Brass
Fitting Height (mm)	310
Lamp Holder	B22
No. of Lamp	1
Lead Time	4 Weeks
Projection (mm)	270
Width (mm)	150



ADDITIONAL INFORMATION

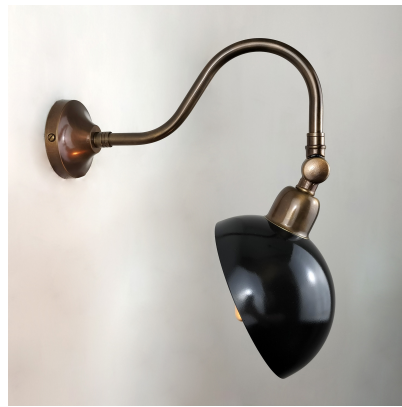
Finish	Antique Brass, Bronze, Pewter, Polished Brass, Satin Brass
Fitting Height (mm)	310
Lamp Holder	B22
No. of Lamp	1

Lead Time	4 Weeks
Projection (mm)	270
Width (mm)	150

VARIATIONS

	Part	Finish
	CL-52786	Antique Brass
	CL-52789	Bronze
	CL-52790	Pewter
	CL-52788	Polished Brass
	CL-52787	Satin Brass

GALLERY IMAGES





PRODUCT DESCRIPTION

Adjustable brass wall light with black brass shade. Available in five different finishes. Please note that the finishes refer to the brass arm, and the shade will remain black. For other colours, please contact us to discuss.

E2 Contract Lighting specialises in the manufacture of bespoke lighting solutions for our clients. If you can't find what you need on our website, contact our [Sales Team](#) who will work with you to create your ideal contract lighting solution.

Please note that this product is manufactured to order. Our current lead times mean that this product will be out for delivery 4 weeks after payment is confirmed. In the event that you wish to return this item, our made to order products are subject to a minimum 30% return fee. See our [Returns](#) page for more details.

