

### DISTRESSED BRASS DISH PENDANT LIGHT



**Part:** CL-43871

**Categories:** [Brochure](#), [Ceiling](#), [Lighting](#), [Pendants](#), [Pendants](#)

**Tag:** [Brass Lighting](#)

#### ADDITIONAL INFORMATION

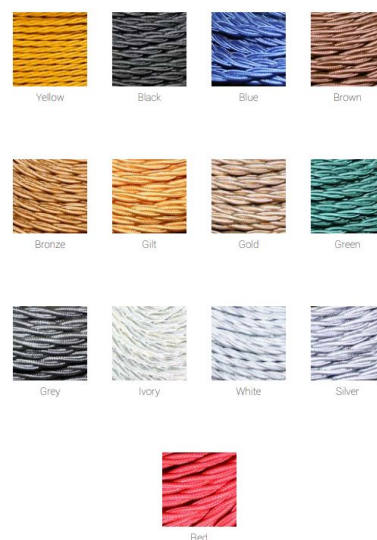
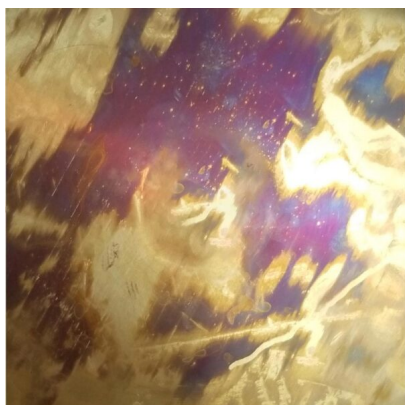
<b>Finish</b>	Distressed Brass
<b>Max Height (mm)</b>	1120
<b>Diameter (mm)</b>	300
<b>No. of Lamp</b>	1
<b>Lamp Holder</b>	B22
<b>Input Voltage (V)</b>	220-240 V, 50/60 Hz
<b>IP Rating</b>	IP20
<b>CE</b>	Yes
<b>Lead Time</b>	4 Weeks

#### ADDITIONAL INFORMATION

<b>Finish</b>	Distressed Brass
<b>Max Height (mm)</b>	1120
<b>Diameter (mm)</b>	300
<b>No. of Lamp</b>	1

<b>Lamp Holder</b>	B22
<b>Input Voltage (V)</b>	220-240 V, 50/60 Hz
<b>IP Rating</b>	IP20
<b>CE</b>	Yes
<b>Lead Time</b>	4 Weeks

### GALLERY IMAGES



### PRODUCT DESCRIPTION

Distressed brass dish pendant light.

E2 Contract Lighting specialises in the manufacture of bespoke lighting solutions for our clients. If you can't find what you need on our website, contact our [Sales Team](#) who will work with you to create your ideal contract lighting solution.

Please note that this product is manufactured to order. Our current lead times mean that this

# E2 Contract Lighting

## SPECIFICATION SHEET

product will be out for delivery 4 weeks after payment is confirmed. In the event that you wish to return this item, our made to order products are subject to a minimum 30% return fee. See our [Returns](#) page for more details.

